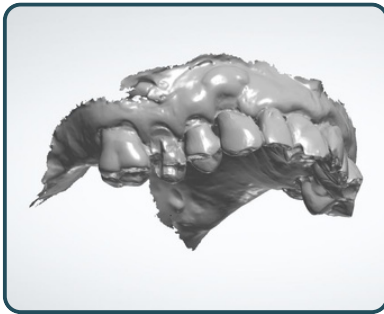


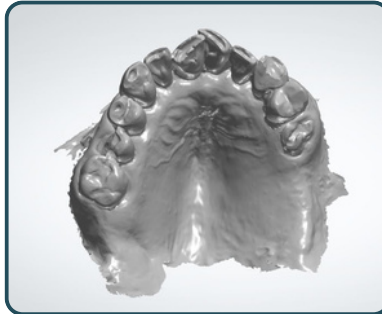
Clinical Procedure:
Scanning for Partial and Immediate Dentures

Step 1: Capture a Preparation Scan of the Restorative Arch

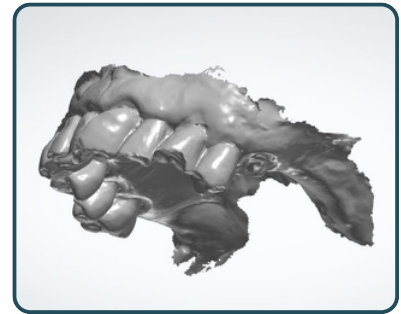
Capture as much of the sulcus and palate as possible



Full depth to the sulcus and behind tuberosity

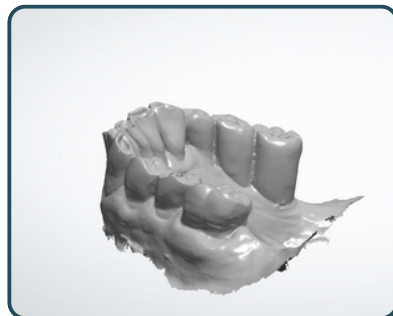


Capture past the vibrating line and fovea palatinae



Full depth to the sulcus and behind tuberosity

Step 2: Capture Antagonist or Opposing Preparation Scan



Clear scan of opposing arch. Include all teeth



Clear scan of occlusal table

Step 3: Bite Scan

If there are no posterior stops, a scan of bite material may be required to make sure the correct vertical is established.



A clear bite scan with multiple points of reference for alignment is required.