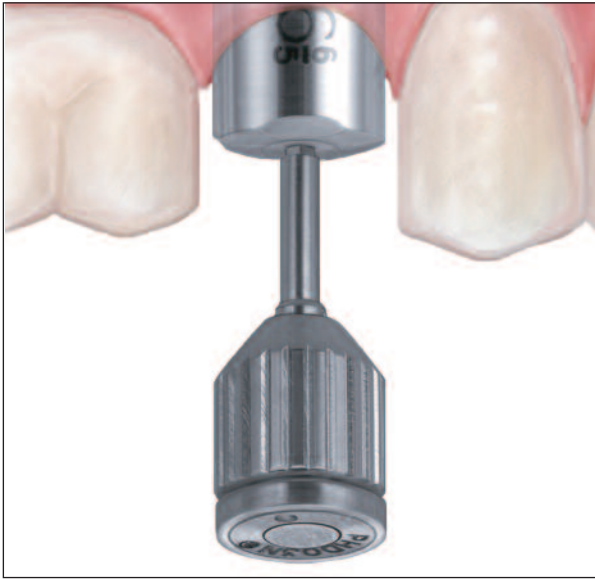
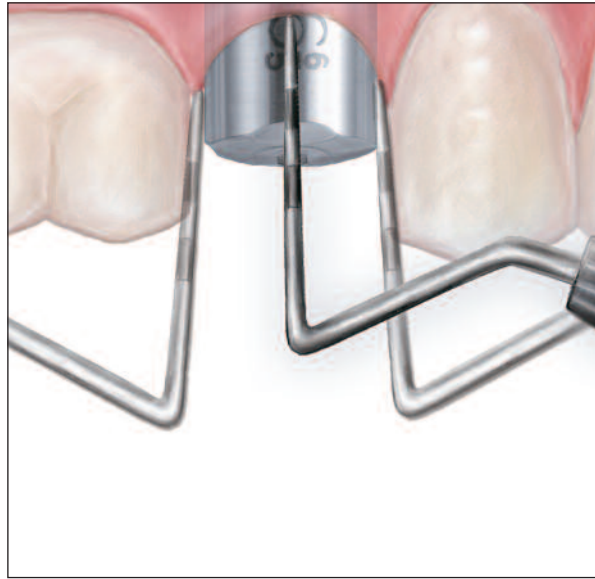


The *BellaTek*™ **Encode**® Impression System

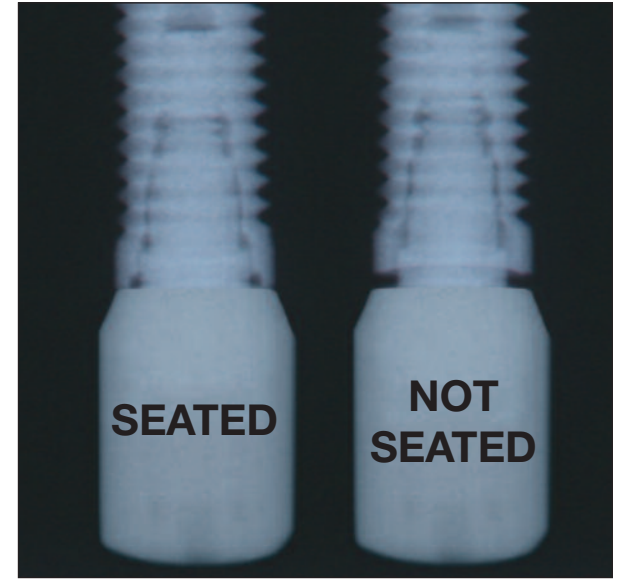
Restorative Recommendations



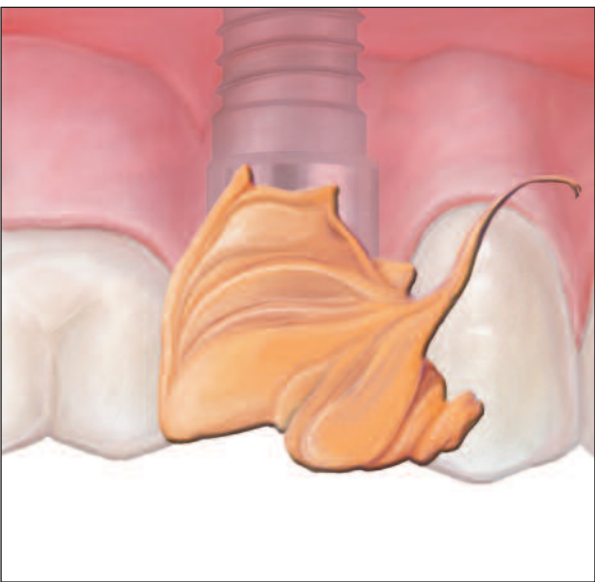
1. Hand Tighten
BellaTek™ Encode® Healing Abutments before impressing.



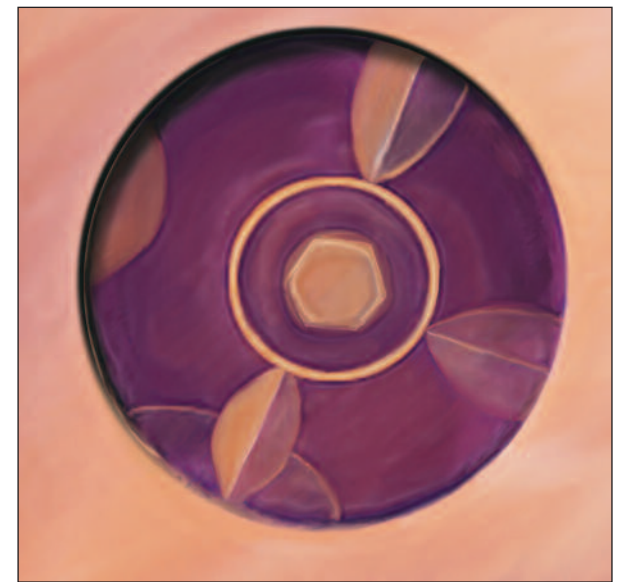
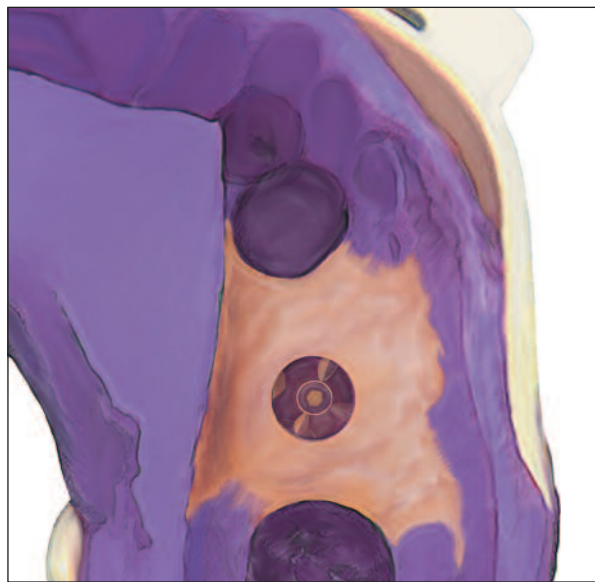
2. The height of the abutment collar, not including the domed occlusal portion, should extend **2mm above the soft tissue (1mm minimum)** on all sides.



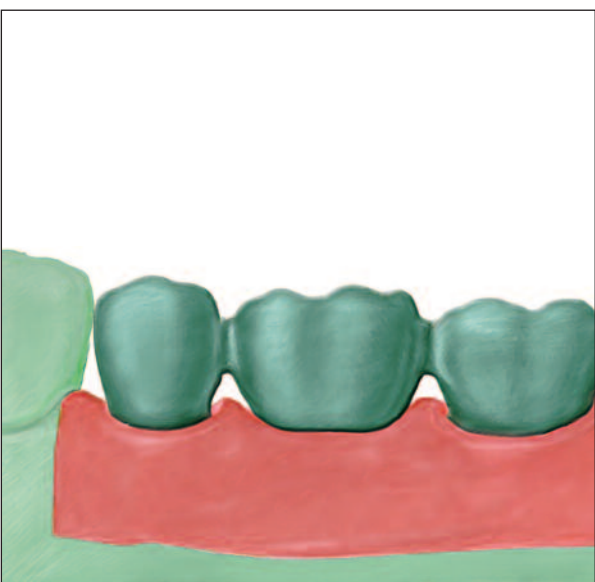
3. Ensure that the *BellaTek*™ Encode® Healing Abutments are **fully seated** on the implant with a **radiograph**.



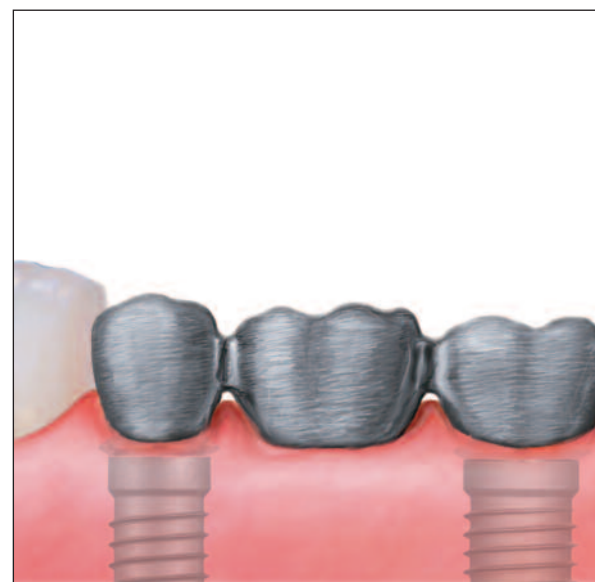
4-5. Use a **light body** impression material around the healing abutment and **medium body** elastomeric impression material (polyether or polyvinyl) in the tray.



6. Verify that a **clear impression** (no rips, tears, bubbles or distortions) has been made of all the *BellaTek*™ Encode® Healing Abutment markings and the entire circumference of the healing abutment. In addition, ensure that the tissue contours have been captured.



7. Larger cases of three or more units should include a **diagnostic wax up**.



8. A **metal or resin framework try-in** is recommended for multiple-unit cases.

Note: The Low Torque Indicating Ratchet Wrench (L-TIRW) or the Restorative Torque Indicator (RTI2035) is recommended for use with zirconia abutments. The Contra Angle Torque Driver (CATD0) is contraindicated for use with zirconia abutments because it may inadvertently apply lateral forces against the abutment, increasing the chance of fracture.



ART1122
REV B 10/11